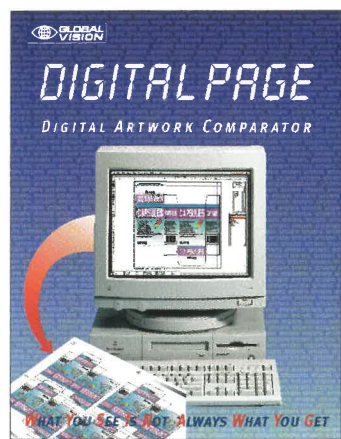


ADDITIONAL GLOBAL VISION PROOF-READING SYSTEMS

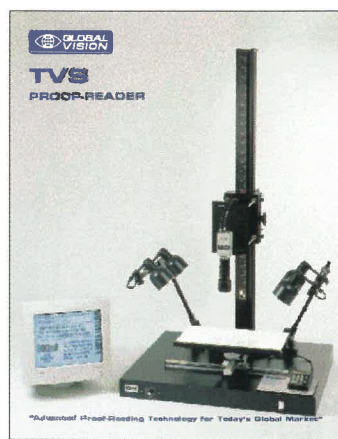
DIGITAL-PAGE™ (Digital Artwork Inspector)

The DIGITAL-PAGE™ is a break-through in "artwork" inspection systems. It is designed for proof-reading electronic graphic files. Differences in electronic artwork can now be compared for revision changes and errors right on your computer screen.



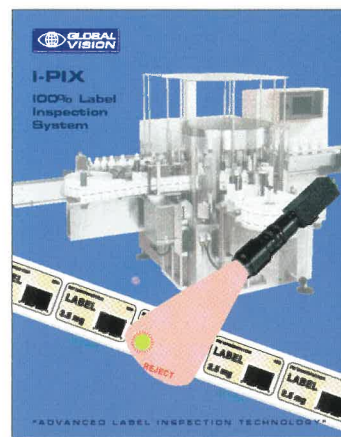
TVS PROOF-READER

The TVS is an electronic proof-reading system which is ideal for quality control inspection of labels, cartons and inserts. The TVS instantly detects errors as small as missing periods and broken type.



i-PIX (100% Label Inspection System)

The revolutionary i-PIX will verify all text and graphics on every label on every roll. The i-PIX inspects label text, graphics, DIN numbers, product numbers and more, prior to label application.

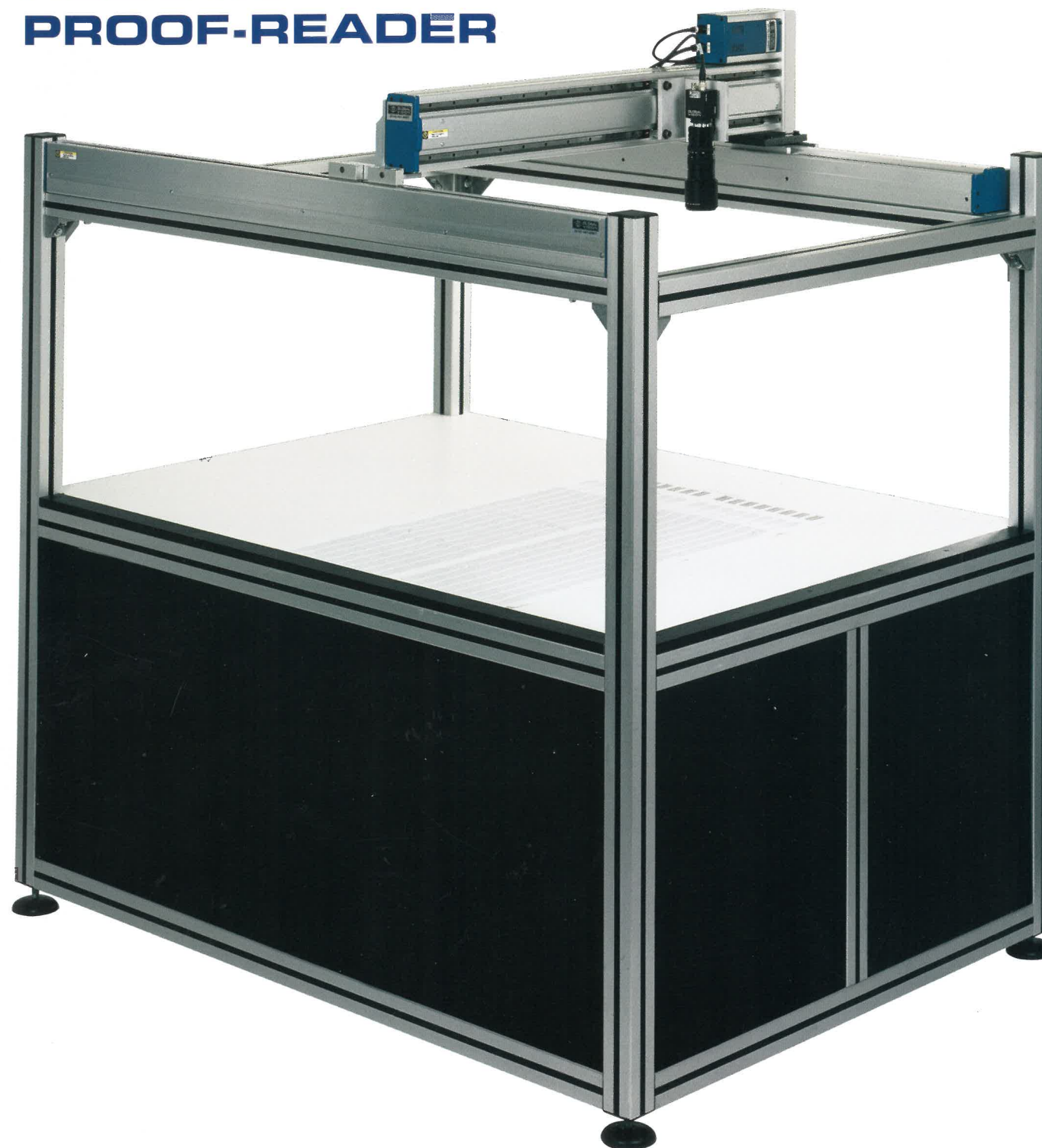


OCR DIGITAL TEXT COMPARATOR

The OCR is an intelligent text reader, spellchecker and document inspection system. Text in all languages, fonts, styles and sizes can be inspected in seconds. Files may be in IBM or MAC format. Exclusively designed for label control, regulatory affairs, graphic design and legal departments.



X-PRESS™ ROBOTIC PROOF-READER



"AUTOMATED INSPECTION TECHNOLOGY"

Global Vision Inc.
Head Office
15795 Gouin Blvd.
Montreal, Canada
H9H 1C5



Tel: (514) 624-4422
Fax: (514) 624-7633
TOLL FREE: 1-800-501-0511
E-mail: info@globalvisioninc.com
Web: www.globalvisioninc.com

FULLY AUTOMATED COLOR PROOF-READING

PRESCRIPTION FOR QUALITY IN PACKAGING

- ✓ Ideal for Label Webs, Cartons & Leaflet Sheets
- ✓ Fast, Automated Inspection
- ✓ Avoid Production Delays & Errors
- ✓ Pre-Press Inspection
- ✓ PDF File Inspection (Digital-Page™)

FEATURES

- **DEFECT ALARM**
Errors trigger a visual and audible alarm.
Stores defect image to the Inspection Report.
- **STORED SET-UP**
Product set-ups stored for re-orders.
Recalls saved masters by product number.
- **AUTOMATED INSPECTION**
Continuous Alignment.
Auto-Distortion Corrections.
Skew Control.
- **COLOR INSPECTION**
Inspects for Color Deviations
and Color Registration.
- **ZOOM**
Full Screen Zoom and Panning
of Master, Sample and
Inspection Images.

**PROOF-READS
LABELS, CARTONS,
INSERTS & FILES
IN SECONDS
IN COLOR**

VERIFIES

- Missing Text
- Missing Graphics
- Broken Type
- Position Errors
- Foreign Languages

INSPECTION TOOLS

DEFECT ALARM



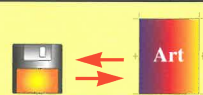
**AUTOMATIC
ALIGNMENT**



**AUTOMATIC
SIZING**



**DIGITAL ARTWORK
INSPECTION**



**MASTERS SAVED
TO DISK**



AUTOMATIC INSPECTION REPORTING

VALIDATED



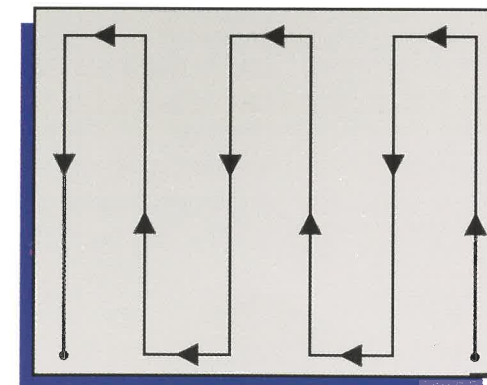
MOTION CONTROL

The X-press™ is equipped with a digital motion controller.

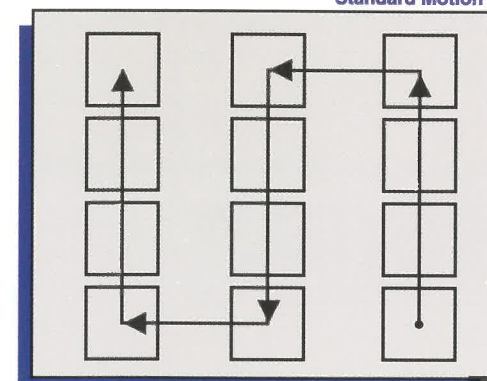
Positioning is precise to 0.0005".
Standard motion is used
for area inspection, or Step &
Repeat motion for special formats.



Motion Controller



Standard Motion



Step & Repeat Motion

ADDITIONAL CAPABILITIES

- **DIGITAL-PAGE™ (Optional)**
PDF File Inspection System.
Compares a PDF-to-PDF file or a
PDF-to-Artwork Hardcopy.
- **ARCHIVE MANAGER
(IMAGE DATABASE)**
Saves Master Proofs &
Product Setup to Disk.
Recalls Masters by Item Number.
- **INSPECTION REPORT**
Prints inspection results. Reports
errors found during proof-reading.
- **PRE-PRESS PROOF-READER**
The X-PRESS™ can be upgraded for
pre-press inspection eliminating
unnecessary set-up and raw
material waste.